



C656-416L-CD

# AIR TRAINING COMMAND

COMPUTER SYSTEMS DEPARTMENT

## CIRCUITS & DIAGRAMS

ABR30533-1  
DIGITAL AND SITUATION DISPLAYS, AN/FSQ-7

15 November 1965

RESPONSIBLE AGENCY OF ATC

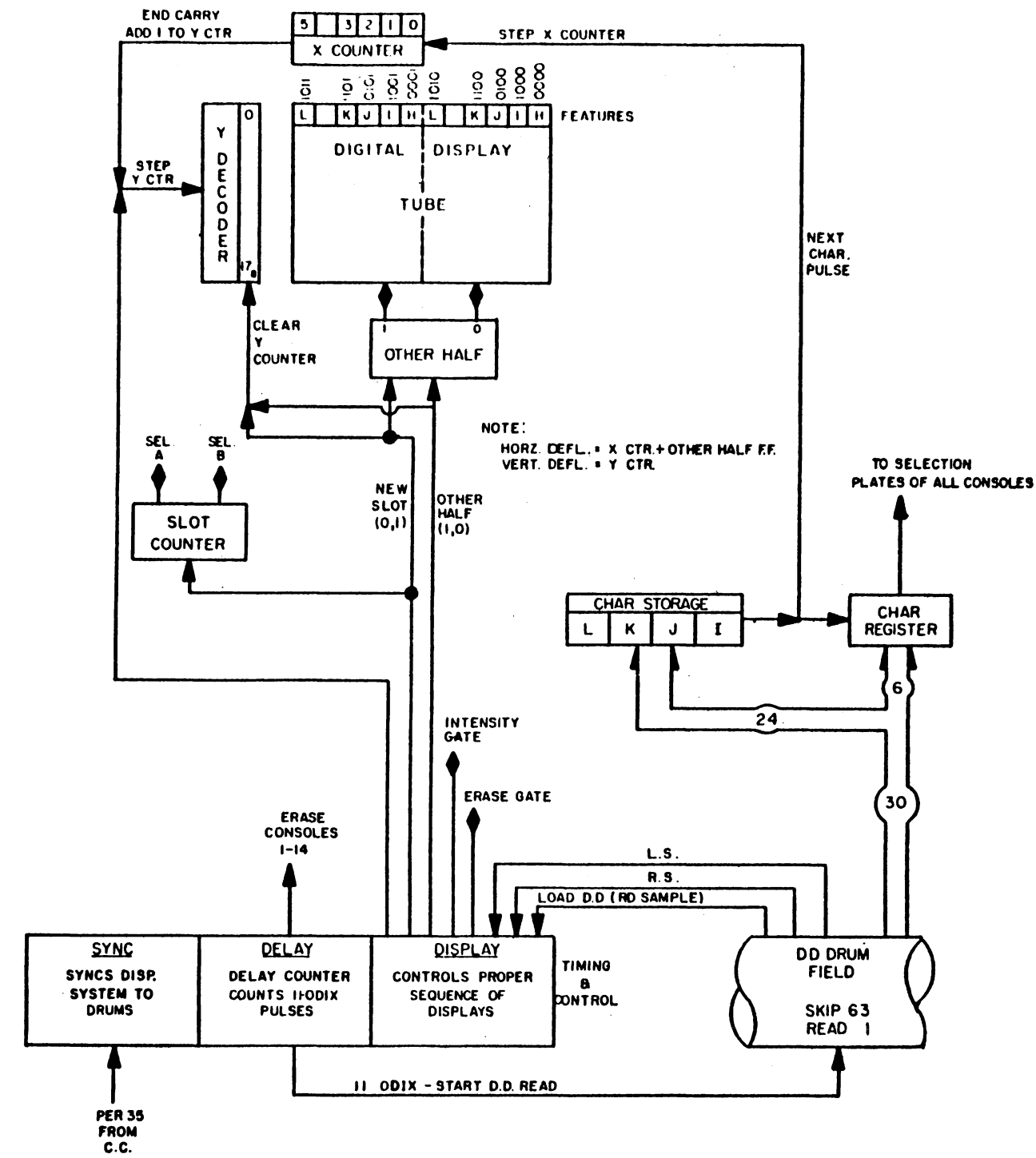
Keesler Technical Training Center  
Keesler AFB, Mississippi

FOR ATC INSTRUCTIONAL PURPOSES ONLY

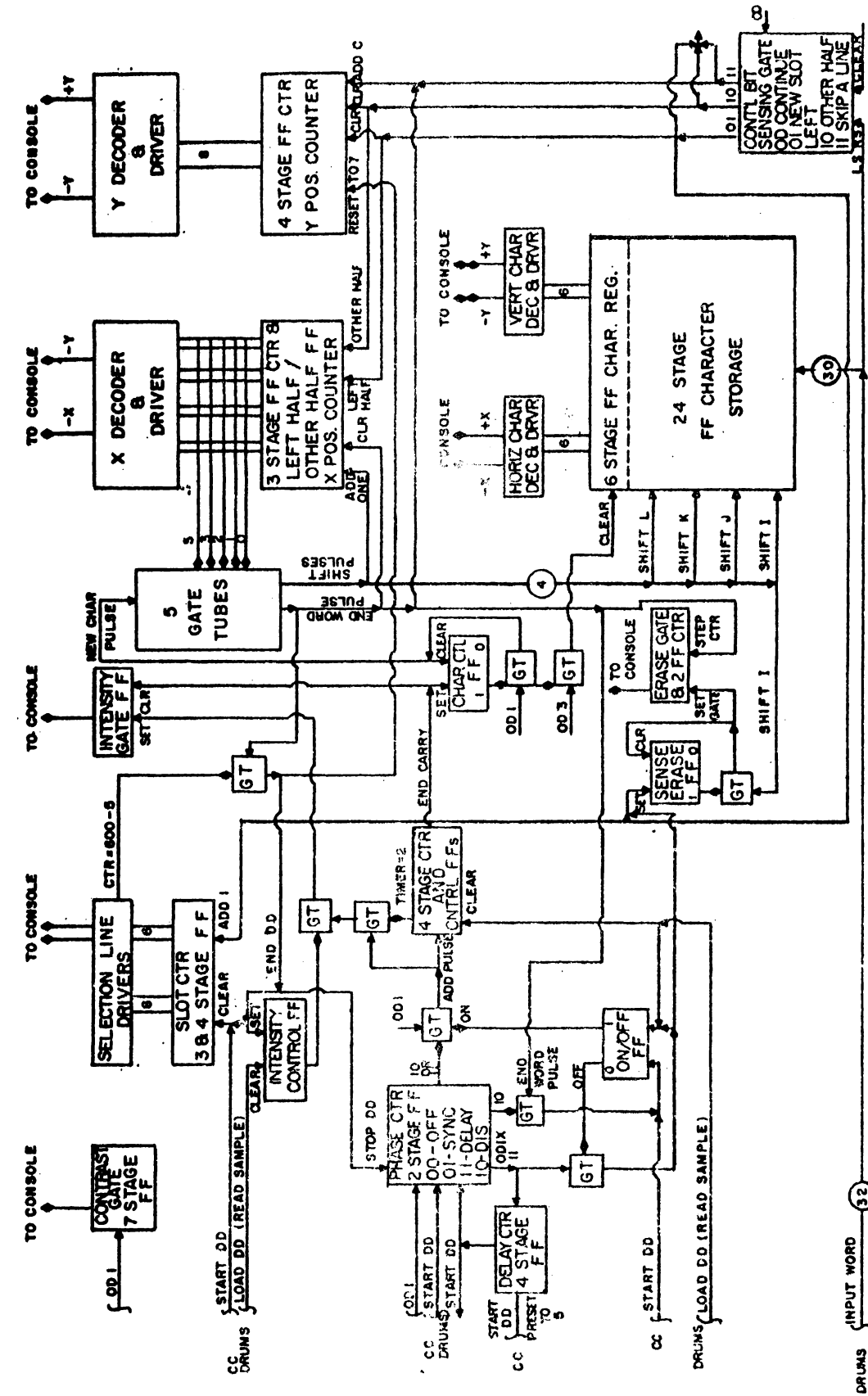
CONTENTS

TITLE	PAGE
DD Block Diagram	1
DDGE Block Diagram	1
Simplified X-Y Decoder Circuit	1
SD Expansion Chart	2
MDI Overall Block Diagram	2
Photographic Recorder-Reproducer, Block Diagram	2
SD Block Diagram	3
Information in Tabular Message	3
SDGE with RD Message In	3
<del>Signal Display Generator Element</del>	4
Situation Display Generator Element	5
SD High Voltage Unit	6
Timing Chart I, Vector Message	7
Timing Chart II, Tabular, Not-Info	8
Timing Chart, Work Sheet	9
SD Console Digital Display	10
M. I. Matrix Readout Alarm & Switching Ckt.	11
Initial Period - DDGE Timing	11
Core Matrix Control	11
Light Gun-Wing Panel Information Flow	12

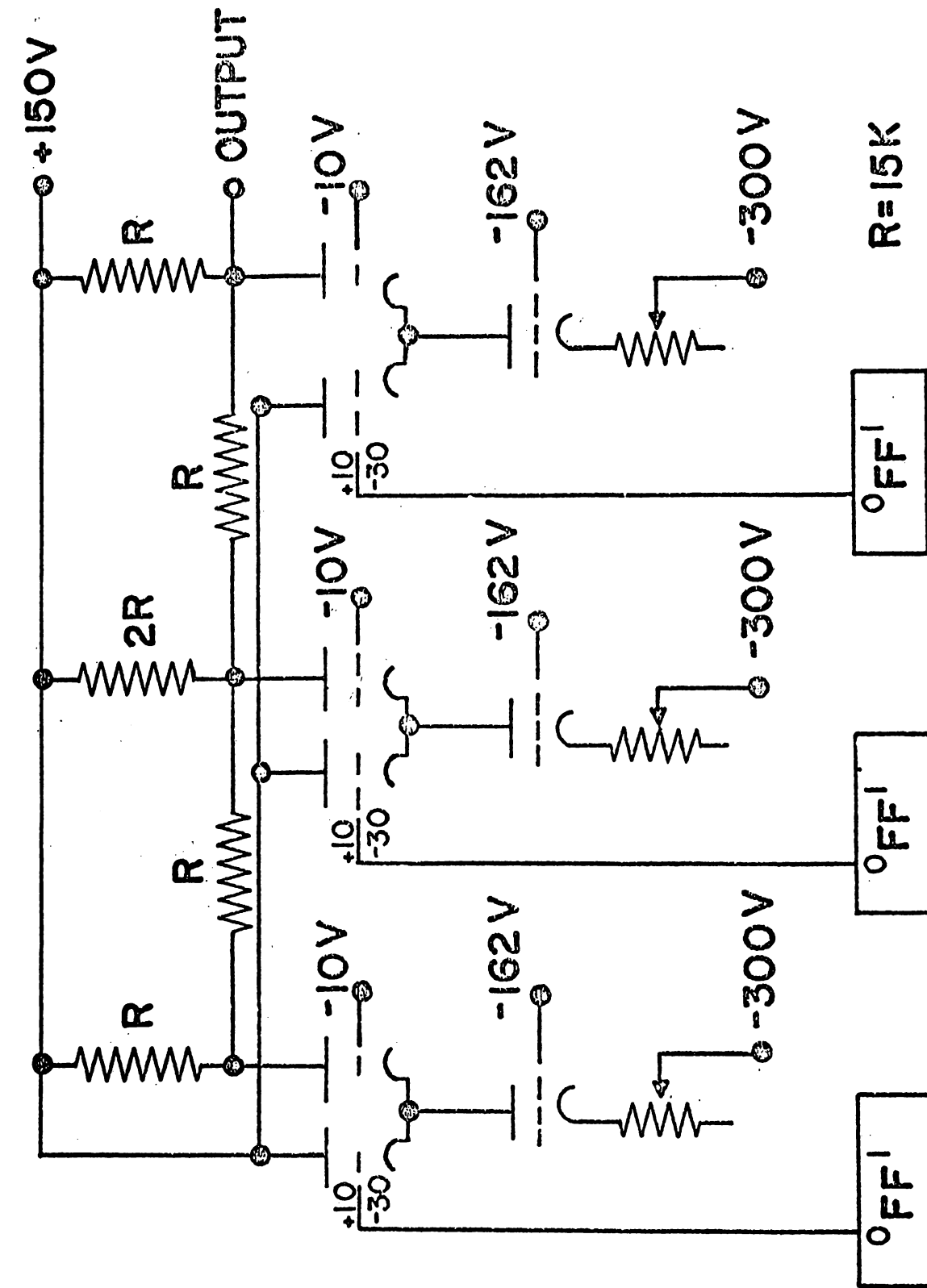
DYE



DD BLOCK DIAGRAM  
FUNCTIONAL BLOCK DIAGRAM OF DIGITAL DISPLAY  
OPERATION AN/FSQ-7

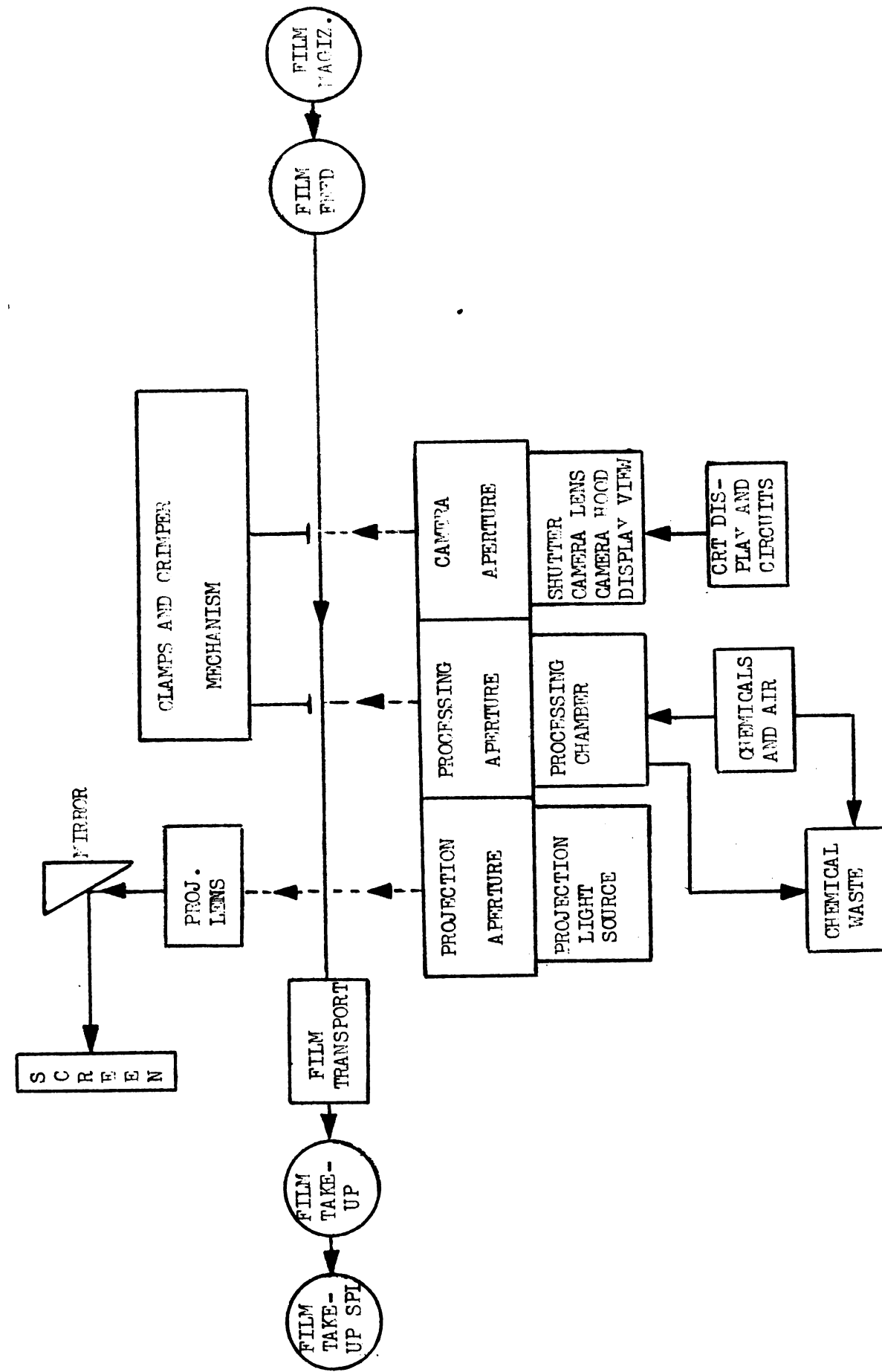


TITLE: DDGE BLOCK DIAGRAM



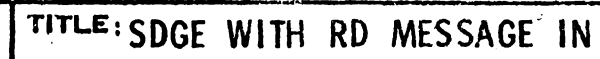
SIMPLIFIED X-Y DECODER CIRCUIT

**TITLE:** M D I Overall Block Diagram



PHOTOGRAPHIC RECORDER-REPRODUCER, BLOCK DIAGRAM

**TITLE:** S.D. BLOCK DIAGRAM



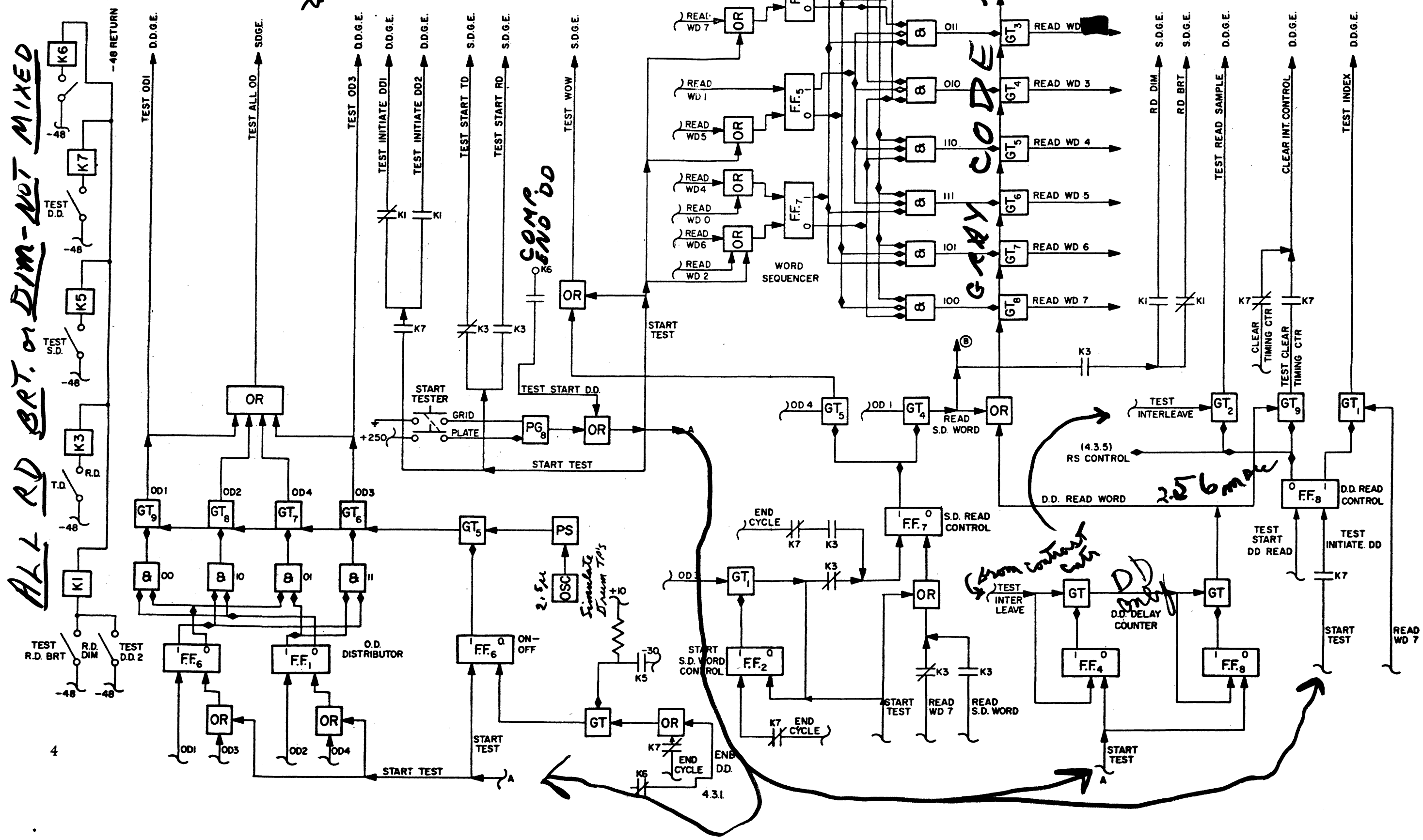
K5 for 9D  
K7 only one as shown in DD test

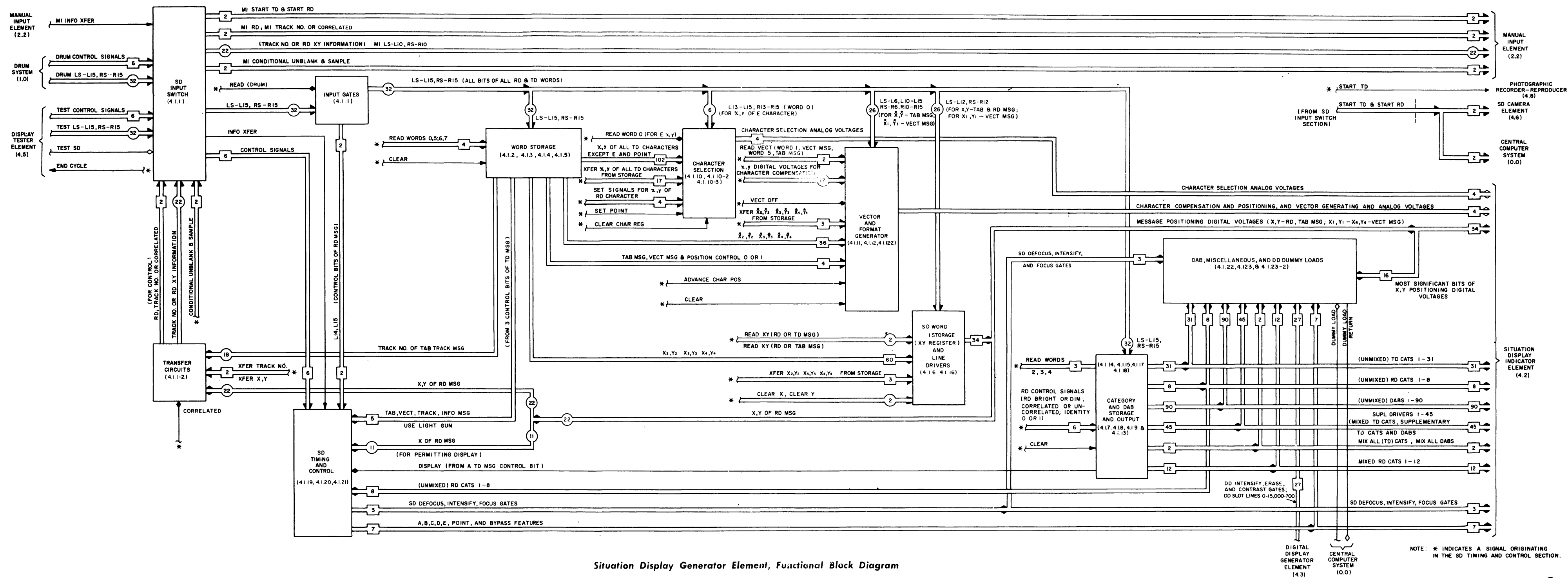
0-1027.54 sec  
to sync DTE  
SDGE  
1st cycle is dummy

# TEST DISPLAY ELEMENT

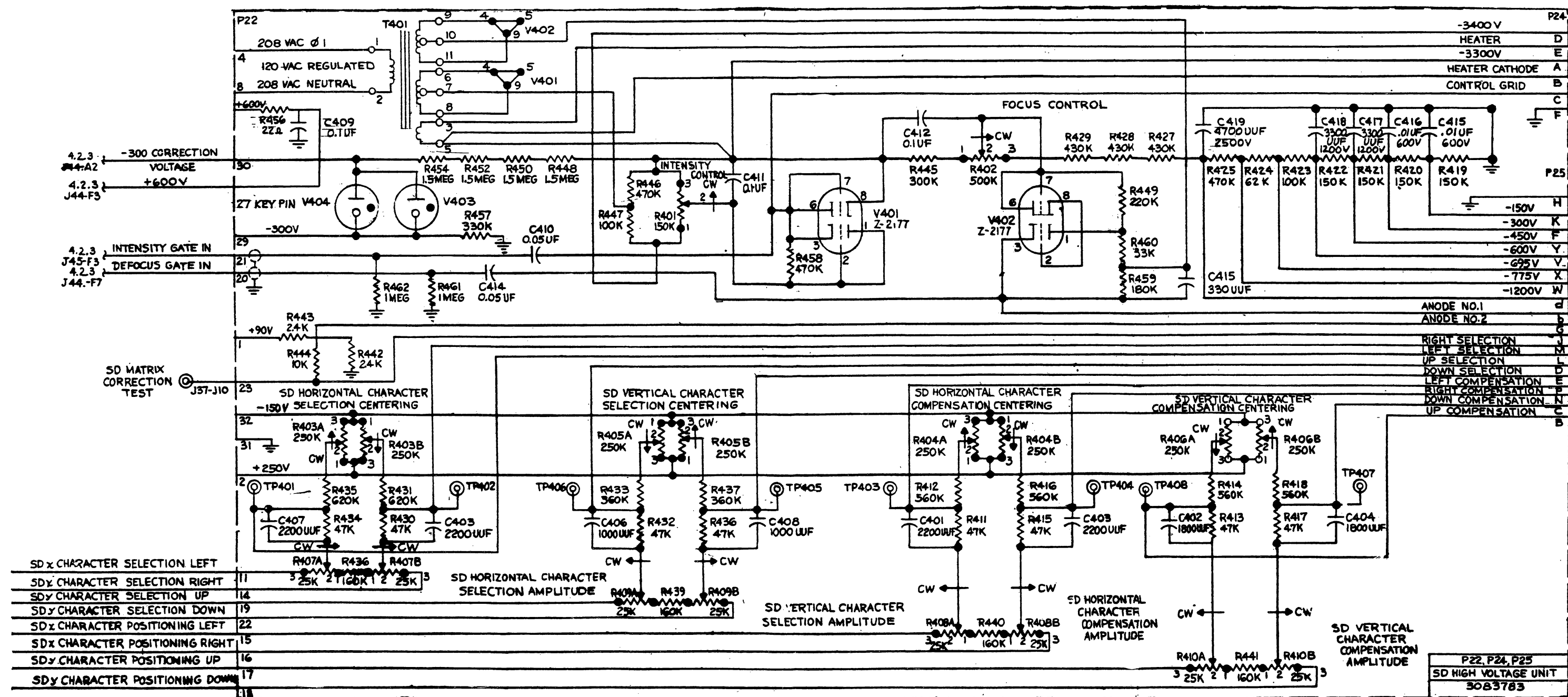
2.56 sec  
20.4 msec  
x 11  
225.28 for st. DTE

ALL RD BRT. or DIM-ROT MIXED



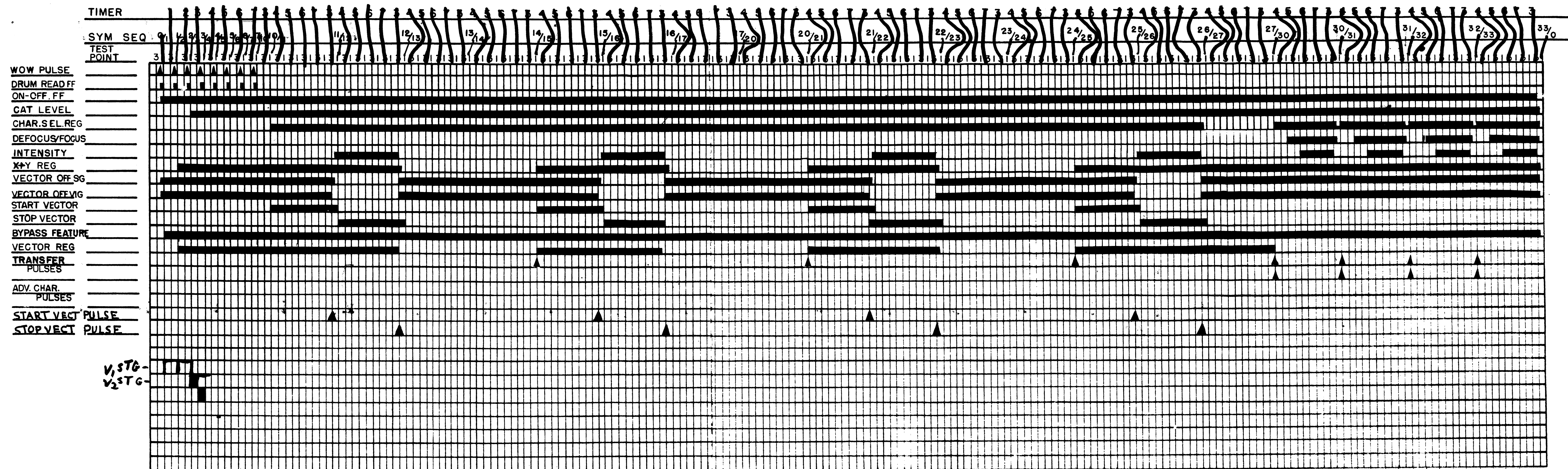


Situation Display Generator Element, Functional Block Diagram

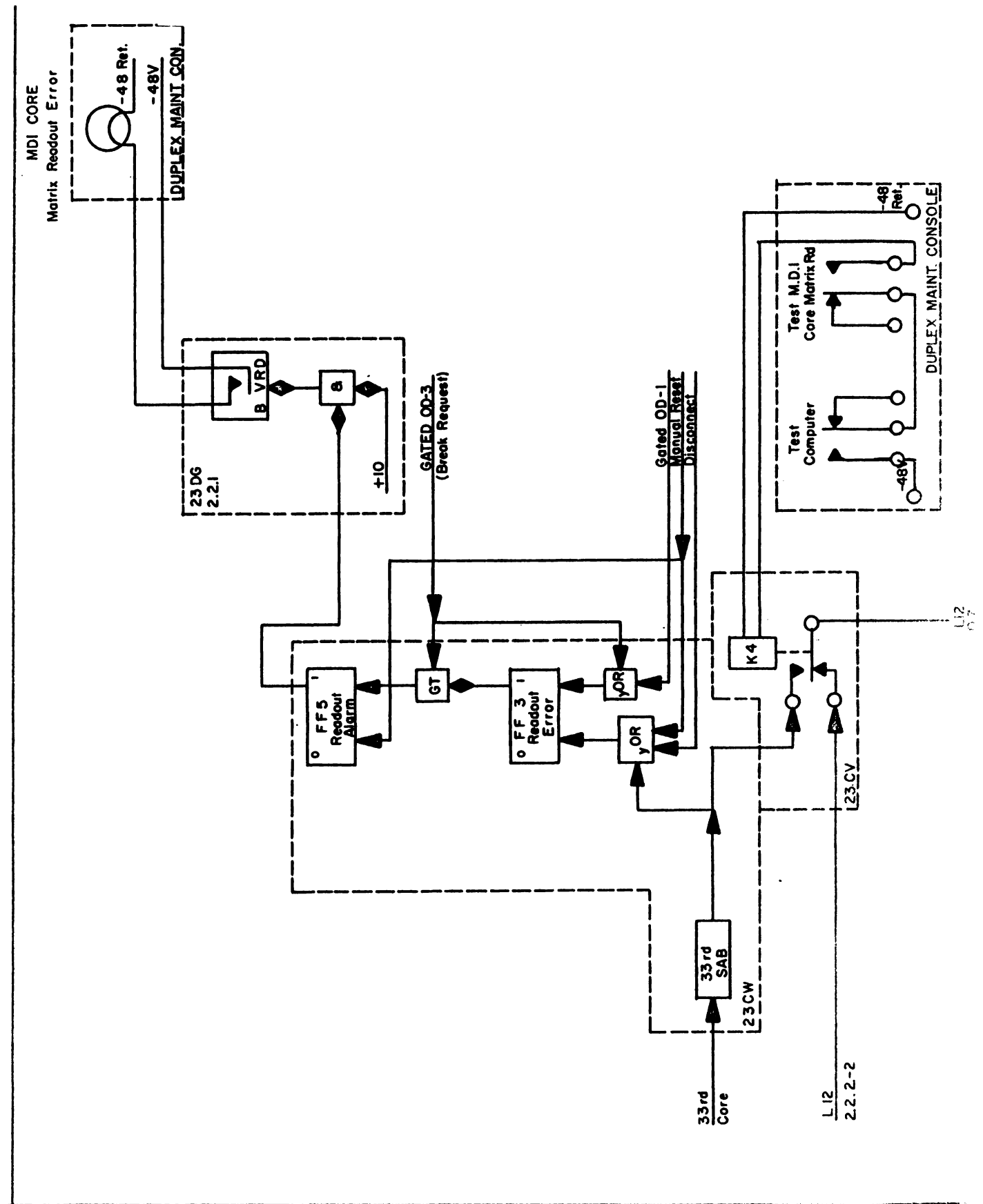




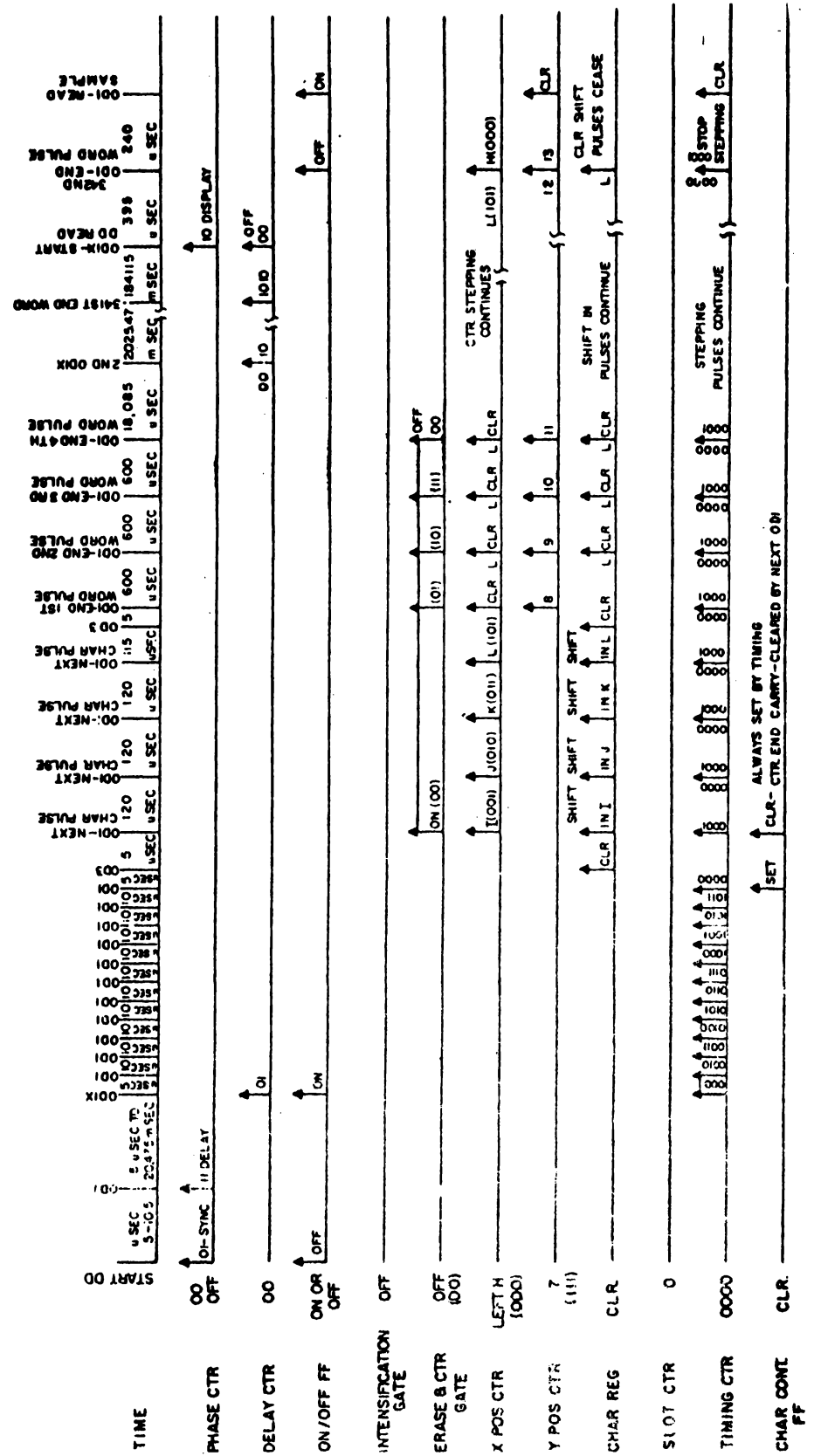
## TIMING CHART I



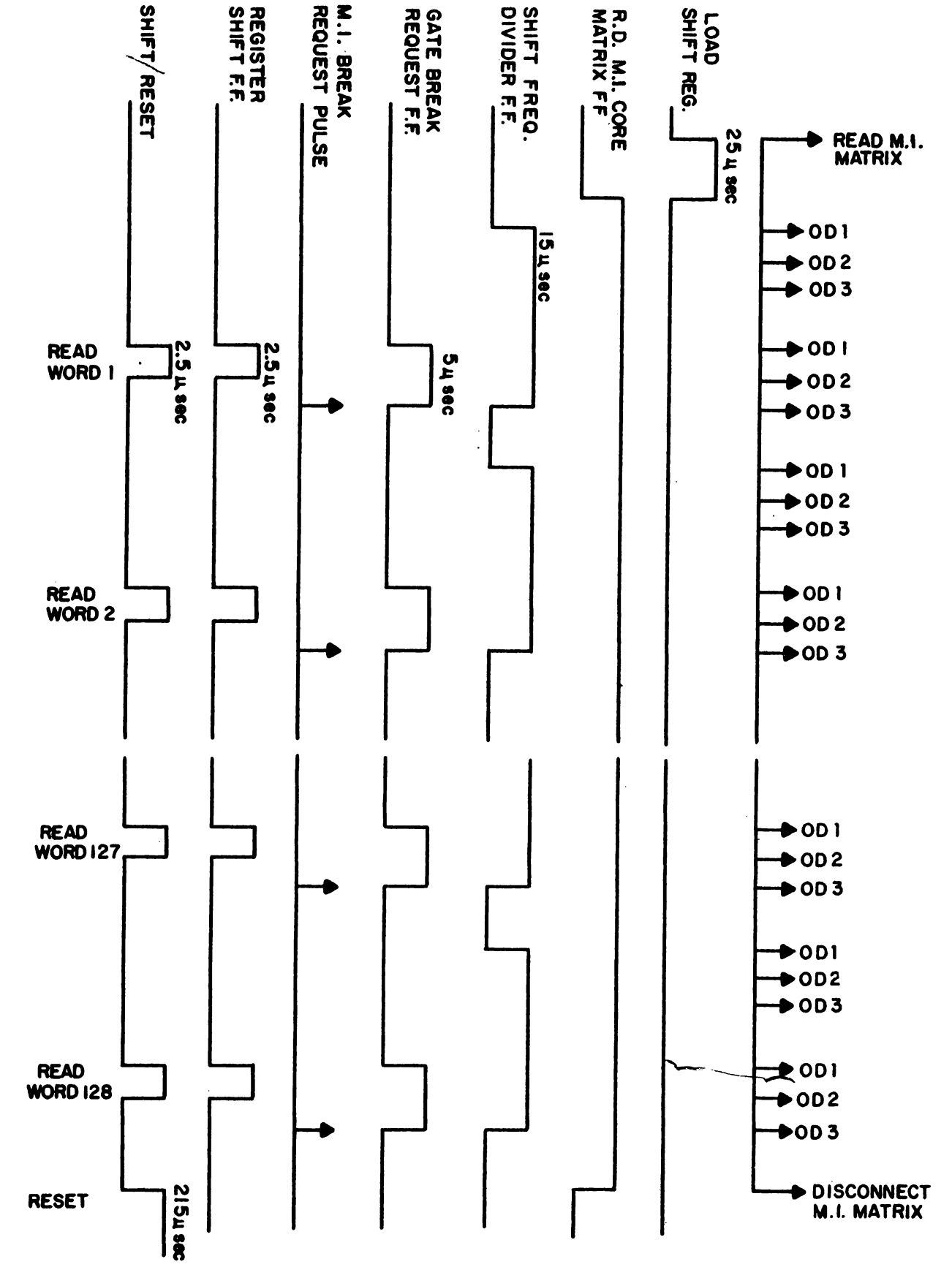




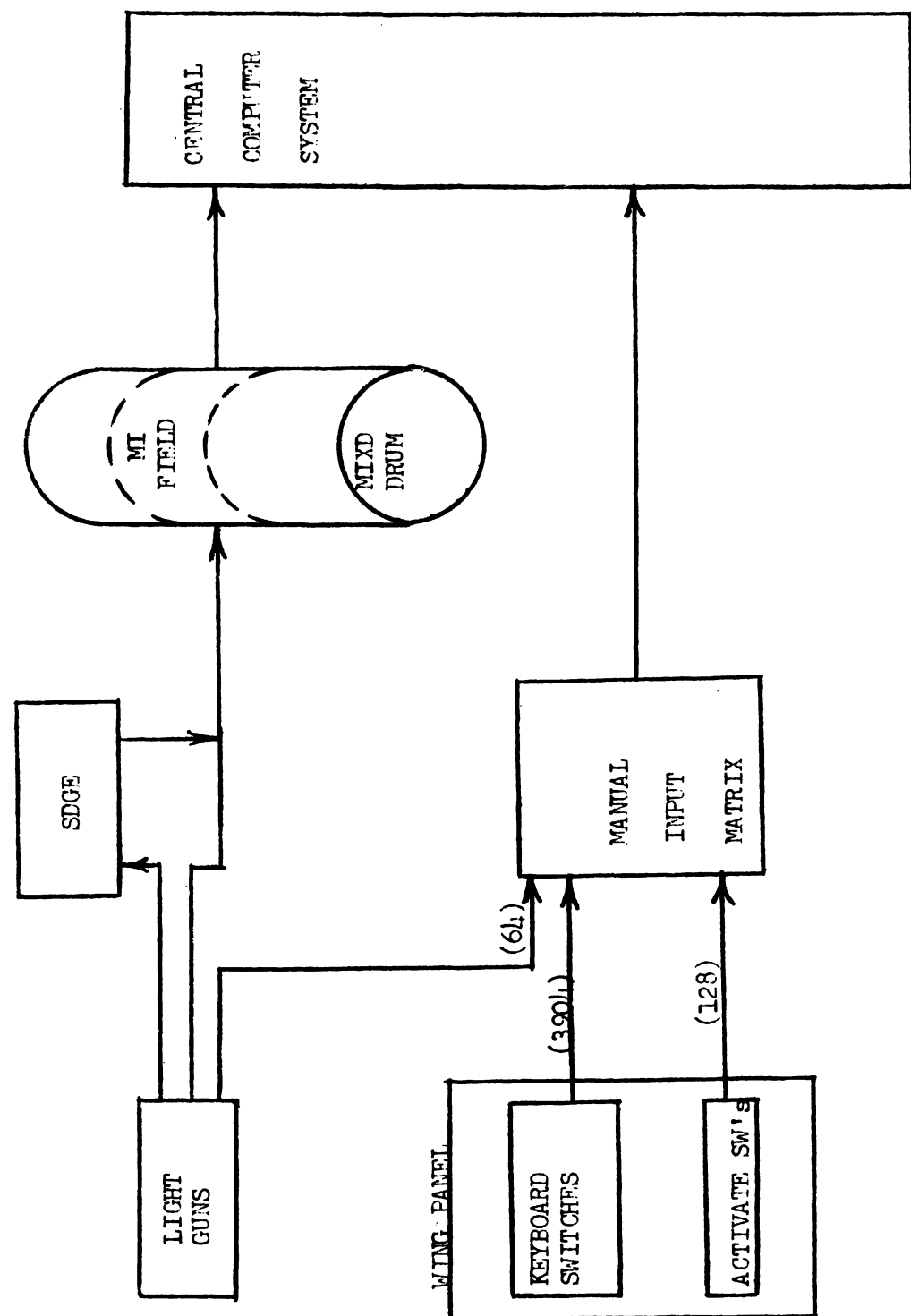
TITLE:  
M. I. Matrix Readout Alarm & Switching Ckt.



INITIAL PERIOD—ODGE TIMING



TITLE: CORE MATRIX CONTROL



LIGHT GUN-WING PANEL INFORMATION FLOW

## NOTES

NOTES