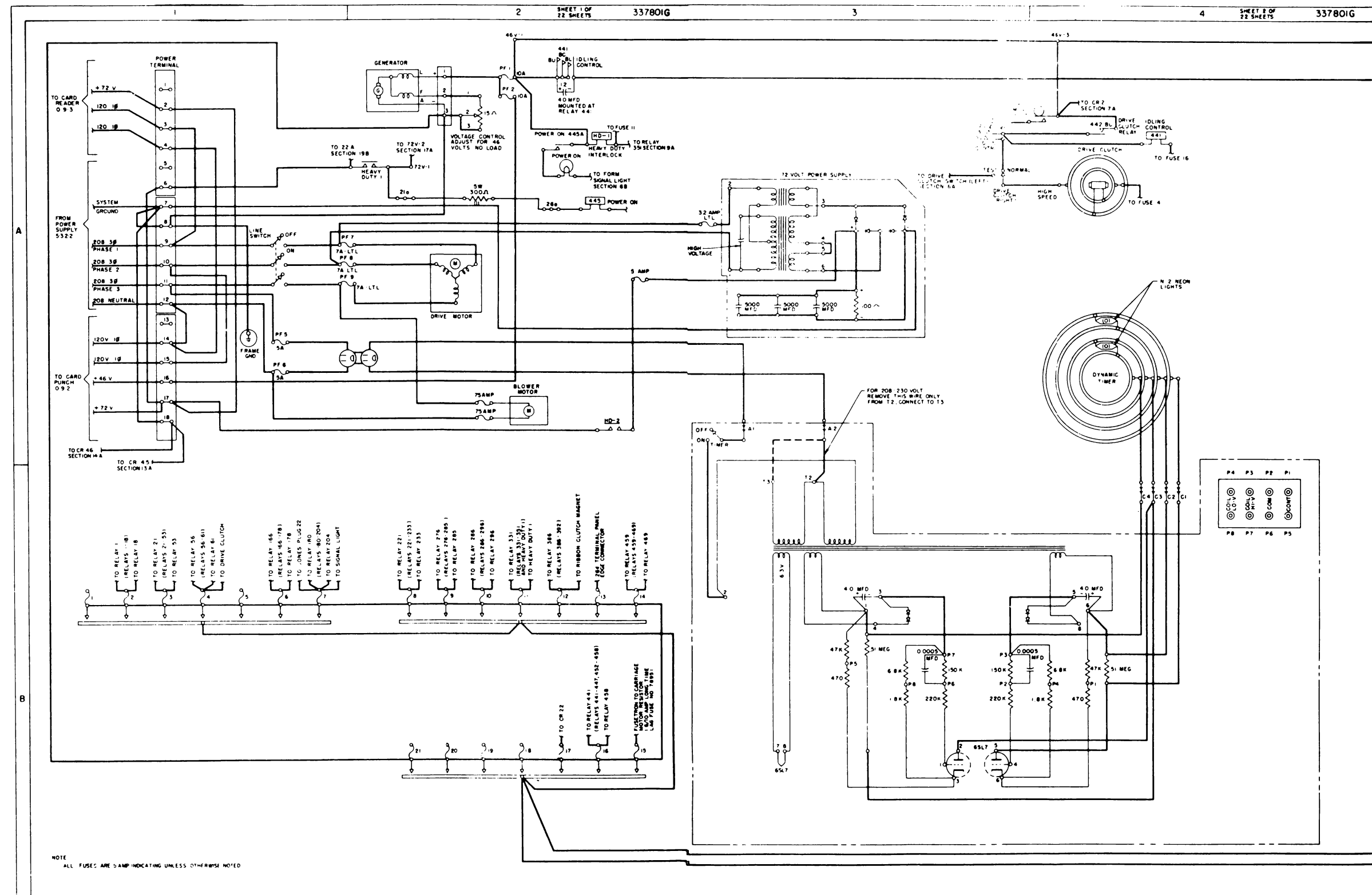
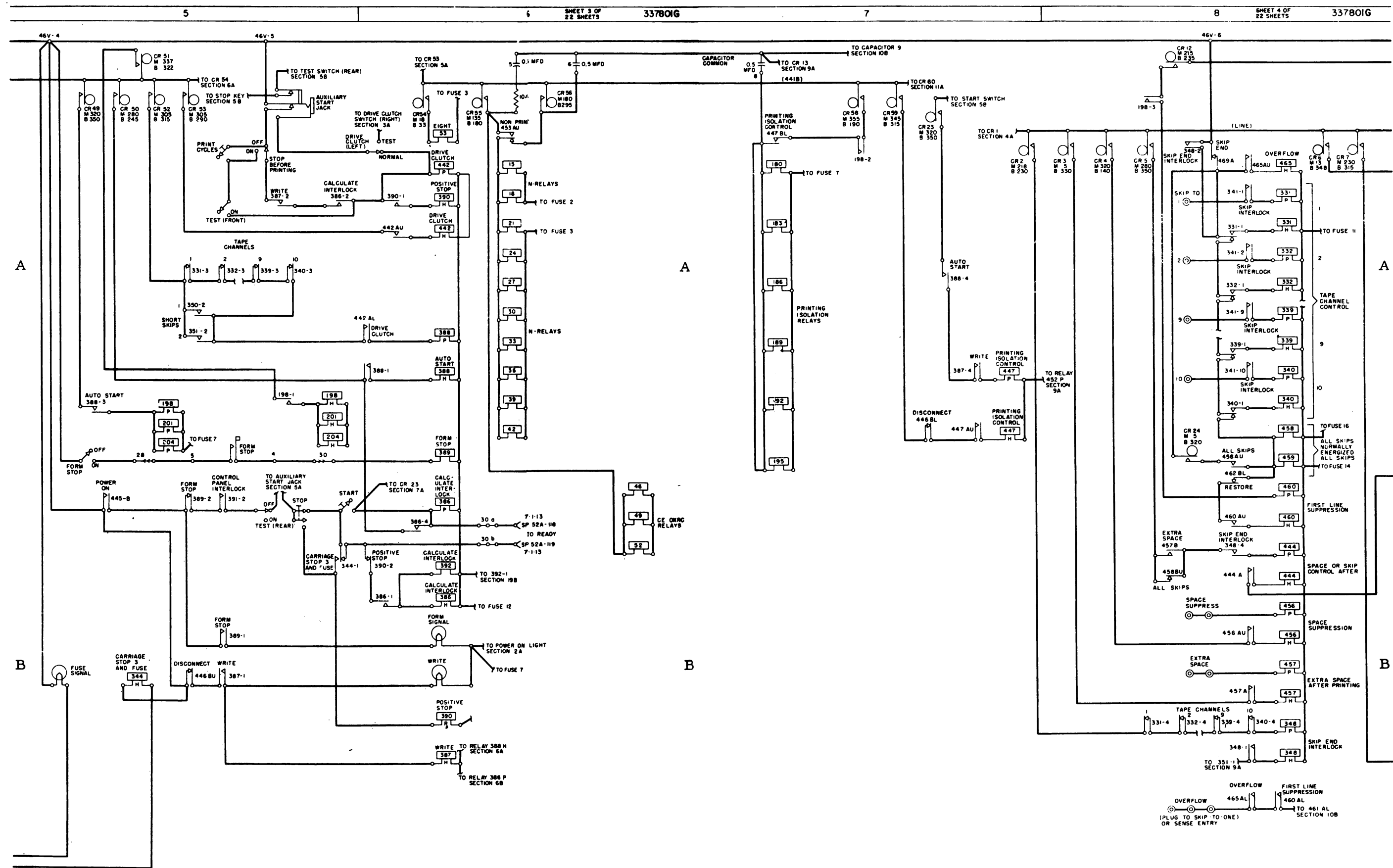


Figure A-1. 020 Computer Entry Pund. Wiring Diagram (Sheet 1)

Figure A-1. 020 Computer Entry Punch, Wiring Diagram (Sheet 2)

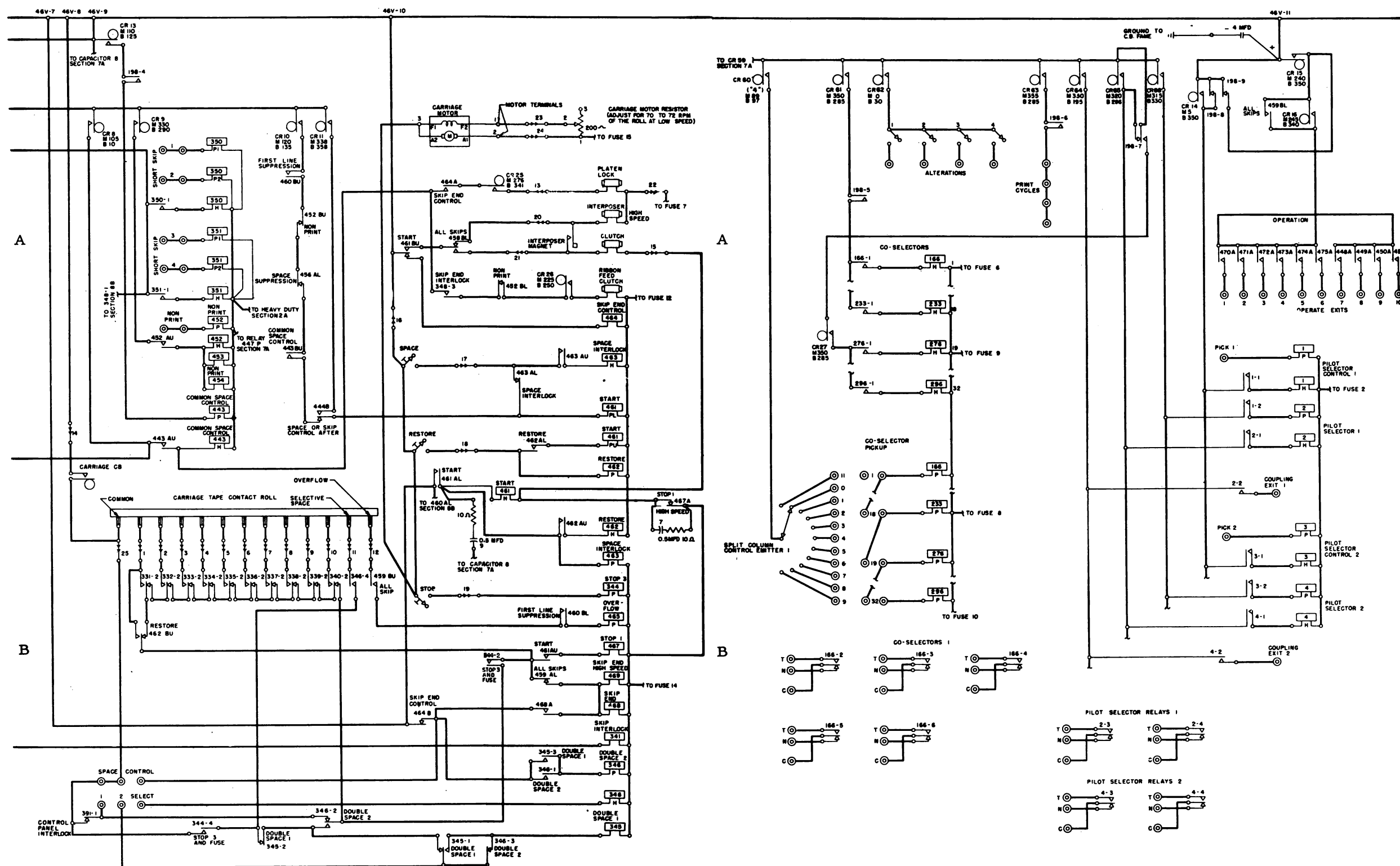


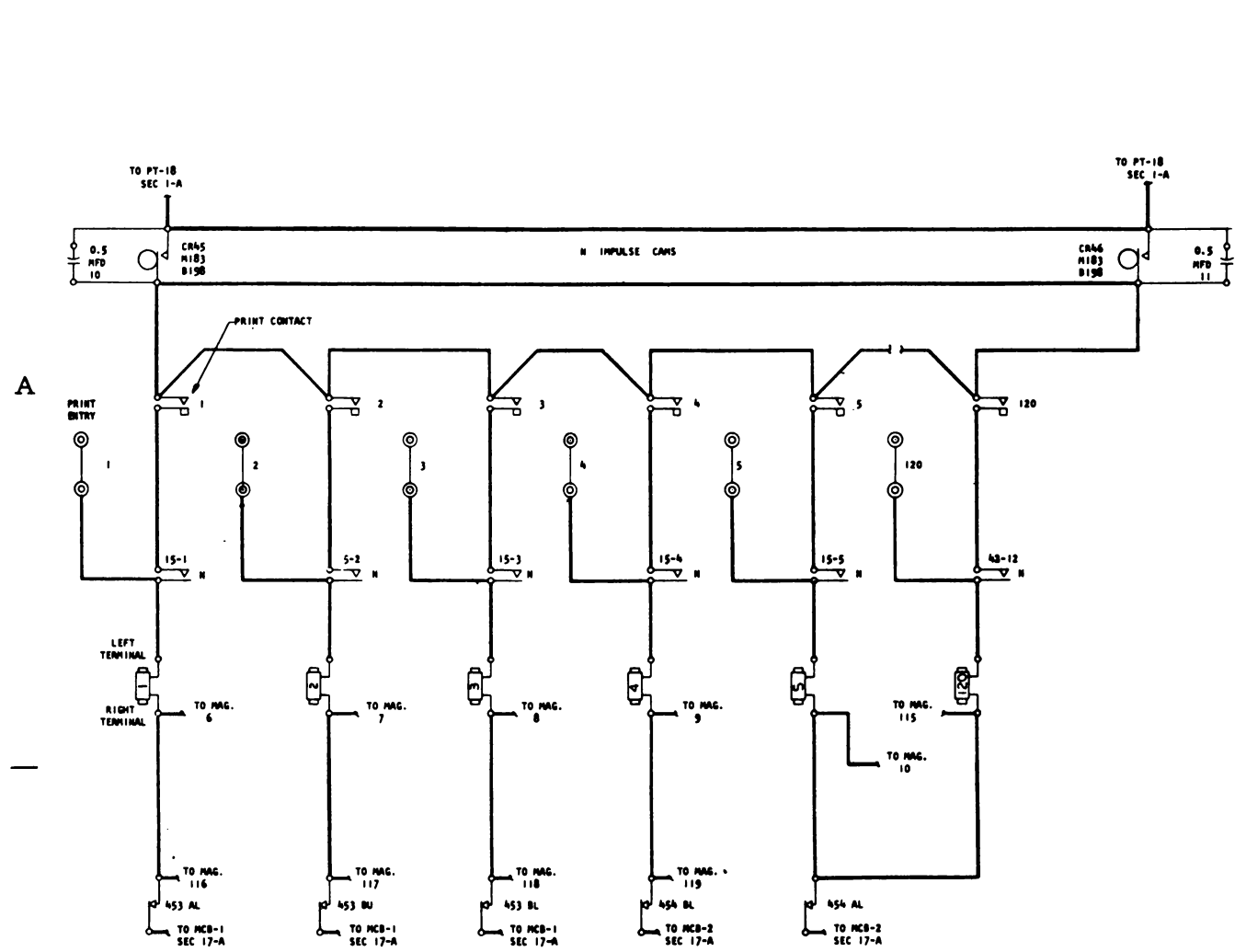
Line Printer Schematic
Atch. #6 Sheet 1



H

Atch #6
Sheet 2

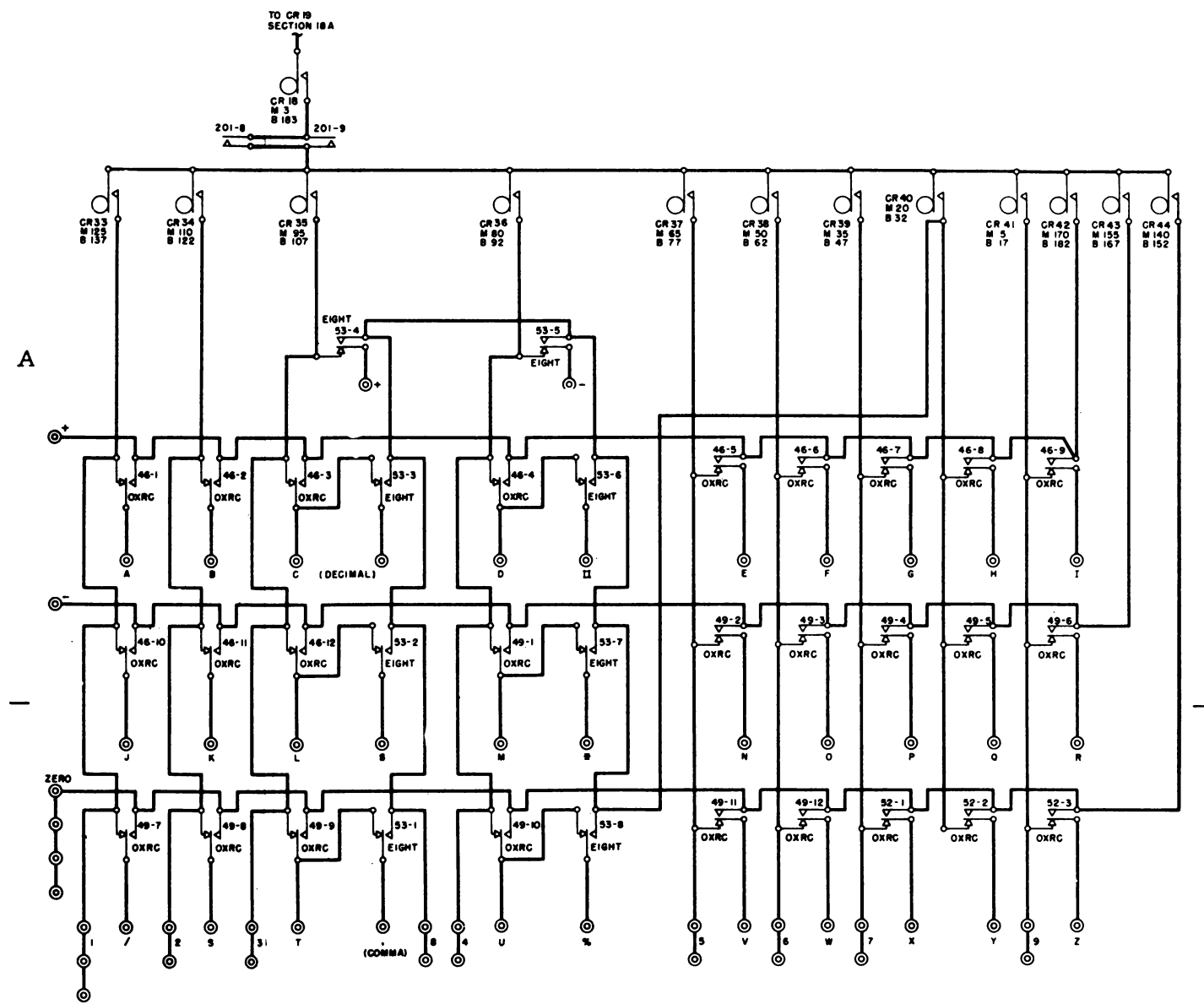




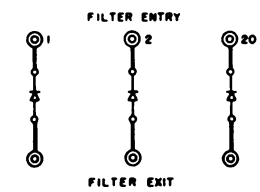
B

NOTE
THE RIGHT TERMINALS OF THE PRINT
MAGNETS ARE COMMON IN 5 HORIZONTAL
ROWS

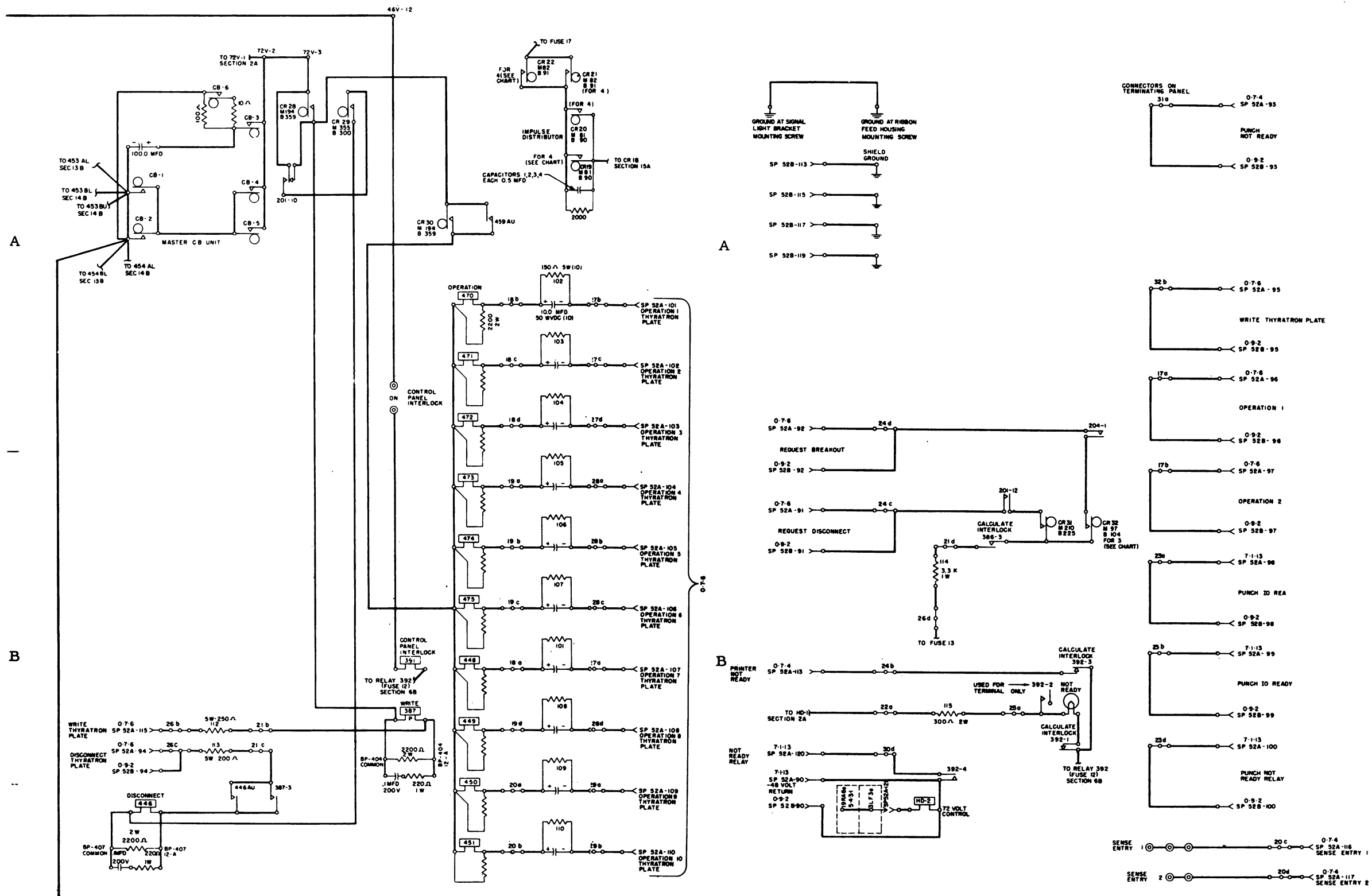
MAGNET	N RELAYS
1-12	15
13-24	18
25-36	21
37-48	24
49-60	27
61-72	30
73-84	33
85-96	36
97-108	39
109-120	42

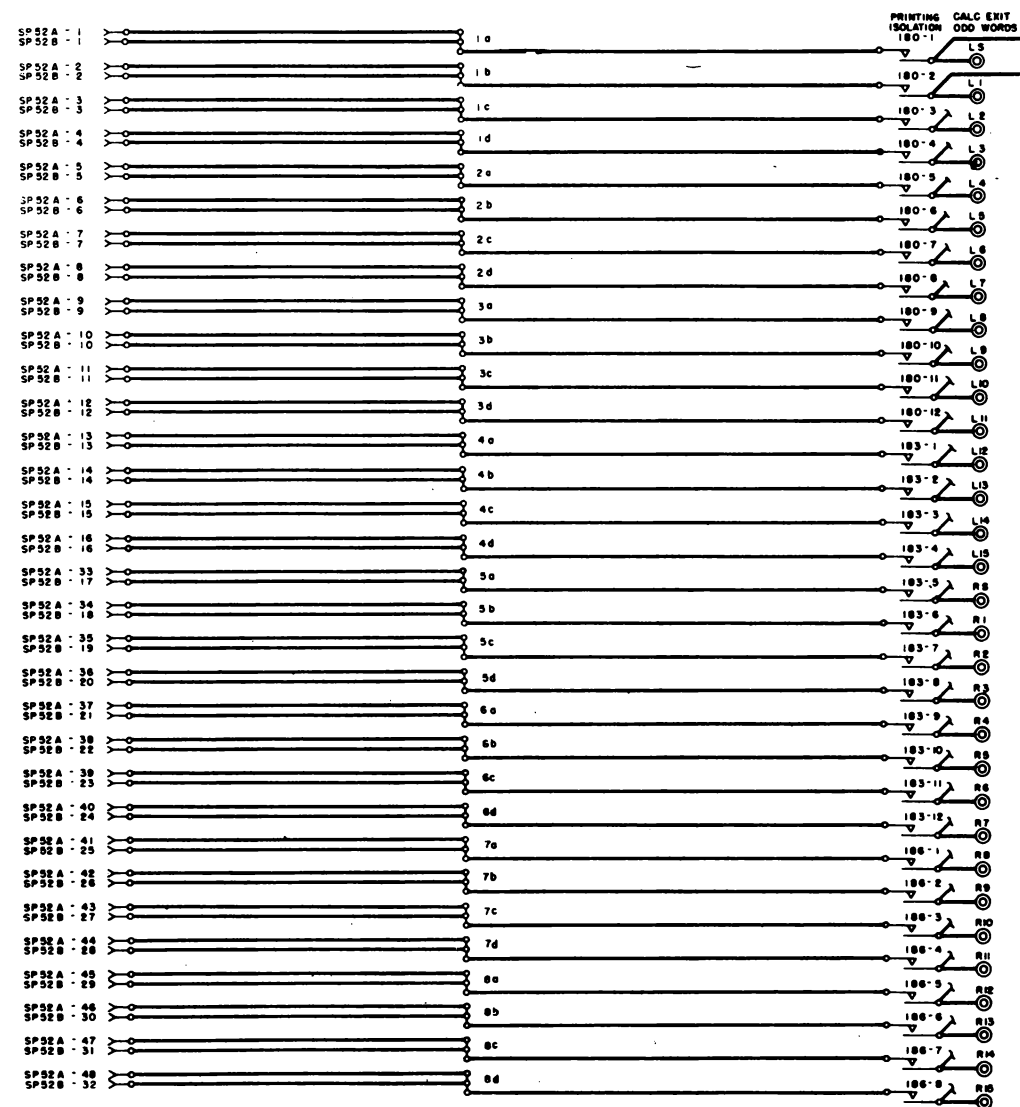


B



J





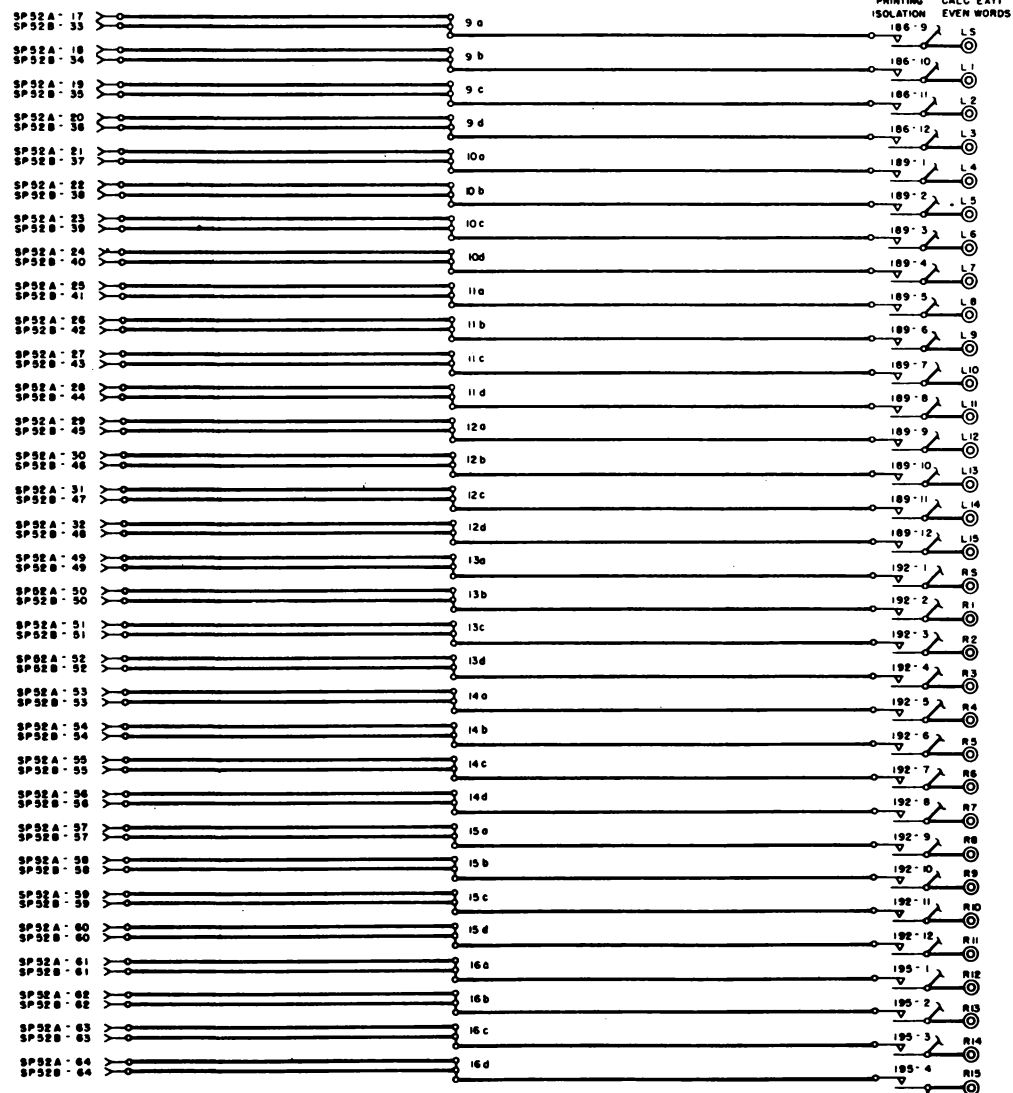
NOTE
SP52A LINES 1-64 CONNECT TO LOGIC NUMBER 0-76
SP52B LINES 1-64 CONNECT TO LOGIC NUMBER 0-92

SP 238-2

COMMON

SP 238-3

SP 238-12



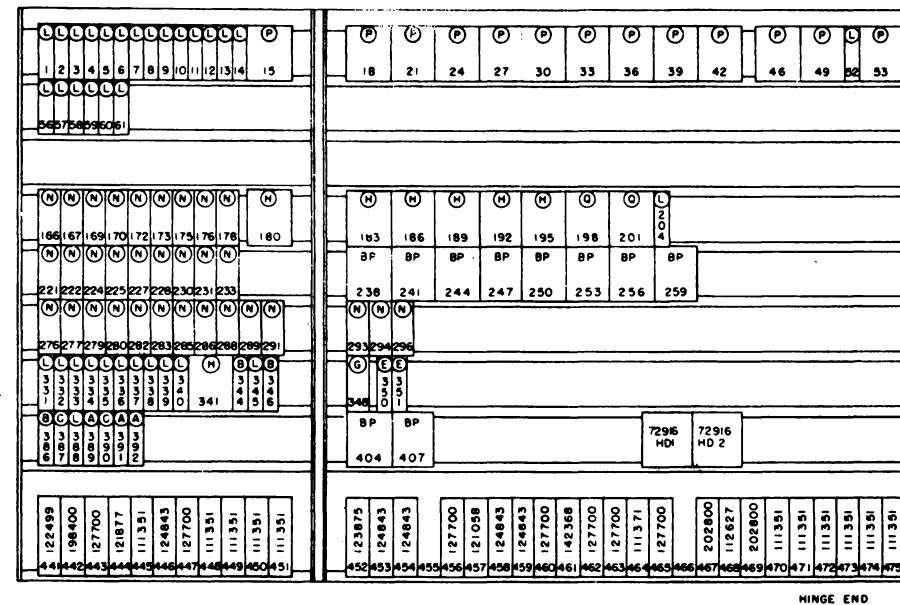
NOTE
SP52A LINES 1-64 CONNECT TO LOGIC NUMBER 0-76
SP52B LINES 1-64 CONNECT TO LOGIC NUMBER 0-92

SP 528

SP 528

[illegible]

RELAY GATE



CODE	SIZE	COILS	COIL NO	ASSEMBLY NO	NAME
(A)	FOUR	ONE	198801	196206	STANDARD
(B)	FOUR	TWO	198804	196207	STANDARD
(C)	FOUR	TWO	198807	196208	HIGH RESISTANCE MOLD
(E)	FOUR	THREE	186693 186259 186260	186696	HIGH SPEED PICK UP
(F)	SIX	ONE	198802	196196	STANDARD
(G)	SIX	TWO	198805	196197	STANDARD
(H)	TWELVE	ONE	198803	196186	STANDARD
(J)	TWELVE	TWO	198806	196187	STANDARD
(L)	FOUR	TWO	228881	104753	HIGH SPEED PICK UP
(M)	SIX	ONE	107559	107558	HIGH SPEED PICK UP
(N)	SIX	TWO	107566	107560	HIGH SPEED PICK UP
(P)	TWELVE	ONE	107557	107556	HIGH SPEED PICK UP
(Q)	TWELVE	TWO	108386	108388	HIGH SPEED PICK UP

M

WIRE CONTACT RELAY CHART

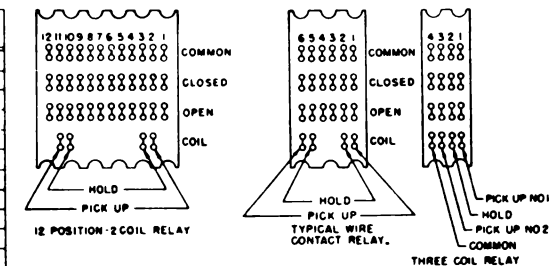
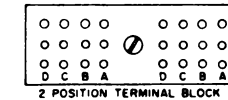
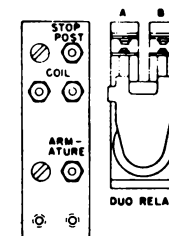
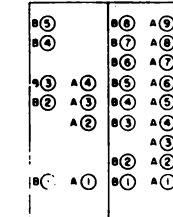
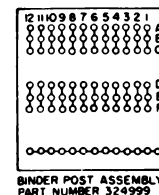
RELAY NO.	COILS			CONTACT POINTS												NAME	SIZE	TYPE
	PU 1	PU 2	H	1	2	3	4	5	6	7	8	9	10	11	12			
1	12A		12A	12A	12A											PILOT SELECTOR CONTROL 1	4	L
2	12A		12A	12A	12B	12B										PILOT SELECTOR 1	4	L
3	12B		12B	12B	12B											PILOT SELECTOR CONTROL 2	4	L
4	12B		12B	12B	12B	12B	12B									PILOT SELECTOR 2	4	L
5	THRU 16	NS														PILOT SELECTORS	4	L
16																		
15	6A			13A	13A	13A	14A	14A	NS							"N" POSITIONS 1 THRU 12	12	P
18	6A			NS												"N" POSITIONS 13 THRU 24	12	P
21	6A			NS												"N" POSITIONS 25 THRU 36	12	P
24	6A			NS												"N" POSITIONS 37 THRU 48	12	P
27	6A			NS										13A		"N" POSITIONS 49 THRU 60	12	P
30	6A			NS												"N" POSITIONS 61 THRU 72	12	P
33	6A			NS												"N" POSITIONS 73 THRU 84	12	P
36	6A			NS												"N" POSITIONS 85 THRU 96	12	P
39	6A			NS												"N" POSITIONS 97 THRU 108	12	P
42	6A			NS										14A		"N" POSITIONS 109 THRU 120	12	P
46	6B			15A	15A	15A	15A	16A	16A	16A	16A	16A	15A	15A	15A	CHARACTER EMITTER OXRC POSITIONS	12	P
49	6B			15A	16A	16A	16A	16A	16A	15B	15B	15B	15B	16B	16B	CHARACTER EMITTER OXRC POSITIONS	12	P
52	6B			16B	16B	16B										CHARACTER EMITTER OXRC POSITIONS	4	L
53	6A			15B	15A	15A	15A	15A	15A	15A	15B					CHARACTER EMITTER "EIGHT" POSITIONS	12	P
56	THRU 62	NS														PILOT SELECTORS	4	L
61																		
62		NOT USED																
165																		

WIRE CONTACT RELAY CHART

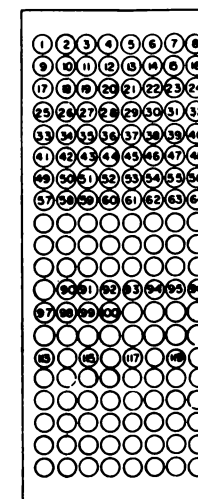
RELAY NO.	COILS			CONTACT POINTS												NAME	SIZE	TYPE
	PU 1	PU 2	H	1	2	3	4	5	6	7	8	9	10	11	12			
192	7A			24A	24B	24B	24B	24B	24B	24B	24B	24B	24B	24B	24B	PRINTING ISOLATION	12	H
195	7A			24B	24B	24B	24B									PRINTING ISOLATION	12	H
198	5A		5A	5A	7A	8A	9A	11A	11A	12A	12A	12A				CF CAM CONTROL	12	Q
201	5A		5A	NS								15A	15A	17A		CF CAM CONTROL	12	Q
204	5A		5A	19A												CF CAM CONTROL	4	L
205																		
THRU	NOT USED																	
220																		
221																CO-SELECTOR 10	6	N
THRU																		
231				19A												CO-SELECTOR 17	6	N
233	11B		11A	11A	NS											CO-SELECTOR 18	6	N
235																		
THRU	NOT USED																	
275																		
276	11B		11A	11A	NS											CO-SELECTOR 19	6	N
277																CO-SELECTOR 20	6	N
THRU	NS																	
294																CO-SELECTOR 31	6	N
295	11B		11A	11A	NS											CO-SELECTOR 32	6	N
297																		
THRU	NOT USED																	
330																		
331	8A		8A	8A	9B	5A	8B									TAPE CHANNEL CONTROL 1	4	L
332	8A		8A	8A	9B	5A	8B									TAPE CHANNEL CONTROL 2	4	L
333	NS		NS	NS	9B	NS	NS									TAPE CHANNEL CONTROL 3	4	L
334	NS		NS	NS	9B	NS	NS									TAPE CHANNEL CONTROL 4	4	L
335	NS		NS	NS	9B	NS	NS									TAPE CHANNEL CONTROL 5	4	L
336	NS		NS	NS	9B	NS	NS									TAPE CHANNEL CONTROL 6	4	L
337	NS		NS	NS	9B	NS	NS									TAPE CHANNEL CONTROL 7	4	L
338	NS		NS	NS	9B	NS	NS									TAPE CHANNEL CONTROL 8	4	L
339	8A		8A	8A	9B	5A	8B									TAPE CHANNEL CONTROL 9	4	L
340	8A		8A	8A	9B	5A	8B									TAPE CHANNEL CONTROL 10	4	L
341	10B			8A	8A	NS										SKIP INTERLOCK	12	M
344	10B		5B	5B	10B		9B									CARRIAGE STOP 3 AND FUSE BLOWN	4	B
345	10B			10B	9B	10B										DOUBLE SPACE 1	4	L
346	10B			10B	9B	10B	9B									DOUBLE SPACE 2	4	B
348	8B		8B	8B	8A	10A	8B									SKIP END INTERLOCK	6	G
350	9A	9A	9A	9A	5A											SHORT SKIP 1	4	E
351	9A	9A	9A	9A	5A											SHORT SKIP 2	4	E
352																		
THRU	NOT USED																	
385																		
386	6B		6B	6B	5A	19B	6B									CALCULATOR INTERLOCK	4	B
387	18B		6B	5B	5A	17B	7A									WRITE	4	C
388	6A		6A	6A		5A	7A									AUTO START	4	L
389	6A			5B	5B											FORM STOP	4	A
390	6B		6A	6A	6B											POSITIVE STOP	4	C
391	18B			9B	5B											CONTROL PANEL INTERLOCK	4	A
392	6B			19B	19B	20B	19B									CALCULATOR INTERLOCK	4	A
393																		
THRU	NOT USED																	
440																		

DUO RELAY CHART

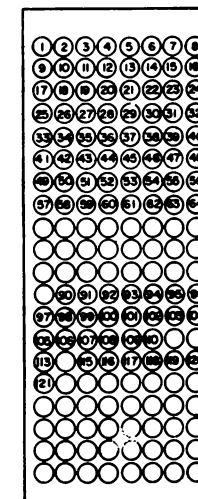
RELAY NO.	COILS			CONTACT POINTS												NAME	TYPE
	PU	PL	H	A	AU	AC	AL	B	BU	BC	BL						
441	4A			3A	3A	3A		2A	2A	2A						IDLING CONTROL	S
442	6A		6A		6A		6A		4A							DRIVE CLUTCH	D
443	9A		9A		9A				9A							COMMON SPACE CONTROL	D
444	8B		8B		8B				9A							CONTROL AFTER SPACE OR SKIP	D
445	2A			2A					5B							POWER ON	S
446	17B				17B					5B						DISCONNECT	D
447	7A		7A		7A											PRINTING ISOLATION CONTROL	D
448	18B				12A											OPERATION 7	S
449	18B				12A											OPERATION 8	S
450	18B				12A											OPERATION 9	S
451	18B				12A											OPERATION 10	S
452	9A		9A		9A				9A		10A					NON PRINT	D
453	9A				6A		13B		14B		14B					NON PRINT	S
454	NS				NS		14B		NS		13B					NON PRINT	S
456	8B		8B		8B		9A									SPACE SUPPRESSION	D
457	8B		8B		8B				8B							EXTRA SPACE AFTER PRINTING	D
458	8A				8A				8B		10A					ALL SKIPS	S
459	8A				18A		10B		9B		12A					ALL SKIPS	S
460	8B		8B		8B		8B		9A		10B					FIRST LINE SUPPRESSION	D
461	10A	10A	10B		10B		10B		10A							CARRIAGE START	T
462	10B		10B		10B		10A		9B		8B					CARRIAGE RESTORE	D
463	10B		10A		10A		10A									SPACE INTERLOCK	D
464	10A			10A					10B							SKIP END CONTROL	S
465	10B		8A		8A		8B									OVERFLOW	D
467	10B			10B												STOP 1	S
468	10B			10B												SKIP END	S
469	10B			8A												SKIP END	S
470	18A			12A												OPERATION 1	S
471	18A			12A												OPERATION 2	S
472	18A			12A												OPERATION 3	S
473	18B			12A												OPERATION 4	S
474	18B			12A												OPERATION 5	S
475	18B			12A												OPERATION 6	S

RELAY TERMINAL BLOCKS
(REAR VIEW)REPRESENTATIVE DUO RELAYS
(REAR TERMINAL) VIEWHIGH SPEED RELAY
(TERMINAL VIEW)SUMMARY PUNCH RECEPTACLE
CONTACT SIDE

SP 52B



SP 52A

MOUNTED VERTICALLY
(UNNUMBERED CONNECTIONS NOT USED)

CO-SELECTORS	RELAYS
1	166
2	167
3	169
4	170
5	172
6	173
7	175
8	176
9	178
10	221
11	222
12	224
13	225
14	227
15	228
16	230
17	231
18	233
19	276
20	277
21	279
22	280
23	282
24	283
25	285
26	286
27	288
28	289
29	291
30	293
31	294
32	296

PILOT SELECTORS	RELAYS
1	1, 2
2	3, 4
3	5, 6
4	7, 8
5	9, 10
6	11, 12
7	13, 14
8	56, 57
9	58, 59
10	60, 61

NOTE
SPLIT COLUMN EMITTER BRUSH TIMING MUST
OVERLAP CR60 BY A MAXIMUM OF 8° MINIMUM
OF 2° (4° (1°) BEFORE MAKE, 4° (1°) AFTER BREAK)

CAN NO.	LOC.	NAME	CAN PART NO.	MAKE TIME	TOL. IN DEG.	BREAK TIME	TOL. IN DEG.
1	4A	DRIVE CLUTCH	182330	145	±1	115	±2
2	7A	SKIP END INTERLOCK	182012	218	±1	230	±2
3	8A	EXTRA SPACE HOLD	182325	5	±2	330	±2
4	8A	SPACE SUPPRESSION HOLD	182179	320	±1	140	±2
5	8A	EXTRA SPACE CONTROL	182070	280	±1	350	±2
6	8A	SHORT SKIP HOLD	182335	13	±2	348	±1
7	8A	SKIP INTERLOCK	182085	230	±1	315	±2
8	9A	COMMON SPACE CONTROL HOLD	182265	105	±2	10	±1
9	9A	NON-PRINT	182320	330	±1	290	±2
10	9A	CARRIAGE START SPACE	182014	120	±1	135	±2
11	9A	CARRIAGE START SKIP	182020	338	±1	358	±2
12	8A	FIRST LINE SPACE SUPPRESSION	182020	215	±1	235	±2
13	9A	COMMON SPACE CONTROL	182014	110	±1	125	±2
14	12A	PILOT SELECTOR CONTROL HOLD	182345	5	±2	350	±1
15	12A	OPERATE EXIT HOLD	182110	240	±2	350	±1
16	12A	OPERATE EXIT IMPULSE	182095	245	±1	340	±2
18	15A	CHARACTER EMITTER COMMON	182179	3	±2	183	±2
19	18A	IMPULSE DISTRIBUTOR	321962	SEE CHART	±1/2	SEE CHART	±1/2
20	18A	IMPULSE DISTRIBUTOR	321962	SEE CHART	±1/2	SEE CHART	±1/2
21	18A	IMPULSE DISTRIBUTOR	321962	SEE CHART	±1/2	SEE CHART	±1/2
22	18A	IMPULSE DISTRIBUTOR	321962	SEE CHART	±1/2	SEE CHART	±1/2
23	7A	ISOLATION RELAY PICK	182030	320	±1	350	±2
24	8A	ALL SKIPS HOLD	182315	5	±1	320	±2
25	10A	PLATEN LOCK MAGNET	182065	276	±1	341	±1
26	10A	RIBBON FEED CLUTCH	182025	225	±1	250	±1
27	11A	CO-SELECTOR HOLD	182295	350	±2	285	±1
28	17A	WRITE AND OPERATE THYRATRON HOLD	182165	194	±1	359	±2
29	17A	DISCONNECT THYRATRON HOLD	182305	355	±1	300	±2
30	18A	OPERATE THYRATRON BREAK	182165	194	±1	359	±2
31	19B	REQUEST DISCONNECT	182014	210	±1	225	±2
32	20B	REQUEST BREAKOUT	321962	SEE CHART	±1	SEE CHART	±1/2
33	15A	CE PRINT 1	182012	125	±1	137	±1
34	15A	CE PRINT 2	182012	110	±1	122	±1
35	15A	CE PRINT 3	182012	95	±1	107	±1
36	15A	CE PRINT 4	182012	80	±1	92	±1
37	16A	CE PRINT 5	182012	65	±1	77	±1
38	16A	CE PRINT 6	182012	50	±1	62	±1
39	16A	CE PRINT 7	182012	35	±1	47	±1
40	16A	CE PRINT 8	182012	20	±1	32	±1
41	16A	CE PRINT 9	182012	5	±1	17	±1
42	16A	CE PRINT 12	182012	170	±1	182	±1
43	16A	CE PRINT 11	182012	155	±1	167	±1
44	16A	CE PRINT 0	182012	140	±1	152	±1
45	13A	"M" IMPULSE FILTER	182014	183	±1	198	±1
46	14A	"M" IMPULSE FILTER	182014	183	±1	198	±1
49	5A	CF IMPULSE	182030	320	±1	350	±2
50	5A	AUTO START HOLD	182325	280	±2	245	±1
51	5A	CF CYCLE HOLD	182345	337	±2	322	±1
52	5A	AUTO START PICK	321983	305	±1	315	±2
53	5A	DRIVE CLUTCH RELAY HOLD	182345	305	±2	290	±1
54	6A	EIGHT RELAY CONTROL	182014	18	±1	33	±2
55	6A	ONRC RELAY CONTROL	182045	135	±2	180	±1
56	6A	"M" RELAY CONTROL	182115	180	±1	295	±2
58	7A	PH ISOLATION RELAY	182195	355	±2	190	±1
59	7A	ISOLATION RELAY HOLD	182330	345	±2	315	±1
60	11A	OFFSET EMITTER CONTROL	321962	SEE CHART	±1/2	SEE CHART	±1/2
61	11A	CO-SELECTOR HOLD	182295	350	±2	285	±1
62	11A	ALTERATIONS IMPULSE	182030	0	±1	30	±2
63	11A	PRINT CYCLES IMPULSE	182290	355	±1	285	±2
64	12A	PILOT SELECTOR COUPLING EXIT	182225	330	±1	195	±2
65	12A	PILOT SELECTOR HOLD	182325	320	±2	286	±1
66	12A	PILOT SELECTOR PICKUP	182014	315	±1	330	±2

